

TIGER Drylac®

special effect

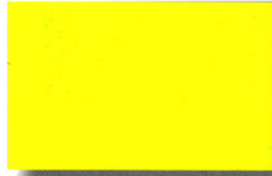
powder coatings
volume 4



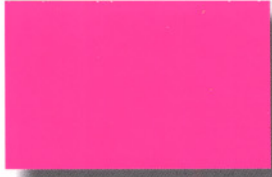
TIGER Drylac®
Powder Coatings

special effects

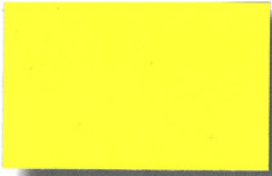
Fluorescent One-Coat



Neon Yellow
59/20043



Neon Pink
59/30075



Yellow
49/22200



Red-Orange
49/24620



Orange
49/24610



Green
49/51340

Fluorescent Two-Coat



Yellow 49/21500
White Basecoat 49/11000



Orange 49/24080
White Basecoat 49/11000



Bright Pink 49/30430
White Basecoat 49/11000

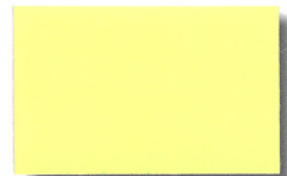


Red 49/30760
White Basecoat 49/11000



Pink 49/32600
White Basecoat 49/11000

Glow-In-The-Dark



Glow-In-The-Dark 49/52100
White Basecoat 49/11000

**Hammertone
Exterior**

**Hammertone
Interior**

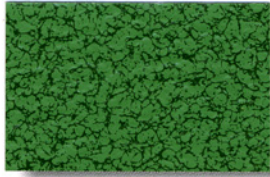


Sapphire
39/40002

Red
09/32870

Malachite
09/50930

Nu-Black
89/90087

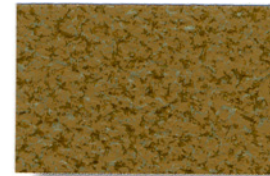
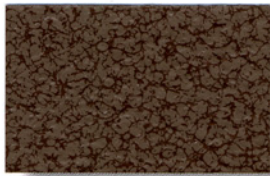
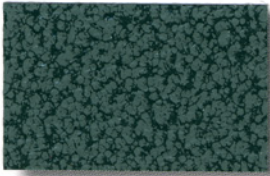


Malachite
39/40003

Capri
09/40750

Goldleaf
09/53120

Nu-Silver
89/90257

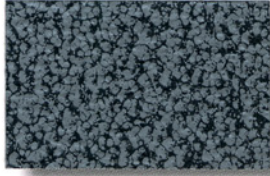
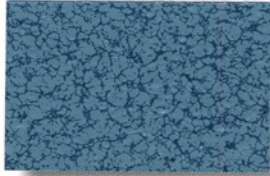


Reseda
39/50002

Sapphire
09/40760

Sepia
09/60660

Nu-Gold Brown
89/90287

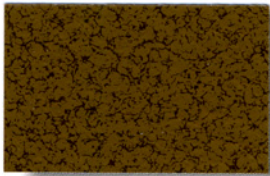


Sepia
39/60002

Pale Blue
09/43000

Silver
09/90250

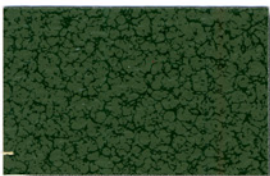
Nu-Light Silver
89/90987



Black
39/80005

Reseda
09/50560

Gold Brown
09/90280



Silver
39/90020

Green
09/50570

Light Silver
09/90980

*Paper and ink limitations of color samples as well as influence from heat and light account for differences from actual powder coatings.

■ Designer Finishes



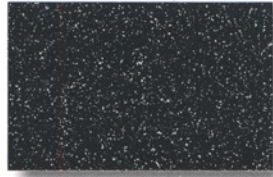
■ **Quartzite Smooth Matte**
44/10033



■ **Rust Fine Texture**
49/62711



■ **Tanzanite Fine Texture**
49/40033



■ **Graphite Smooth Matte**
44/80026



■ **Emerald Fine Texture**
49/50028



■ **Pyrite Fine Texture**
49/60015



■ **Breccia Smooth Matte**
44/60034

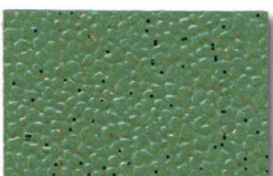


■ **Lava Smooth Matte**
44/60035

■ Antico



■ **Sandstone**
49/15830



■ **Copper Leaf**
49/55490



■ **Granite**
49/77240

■ Dormant Transparent and Clear



■ **Fire Red 59/30045**
Clear Topcoat Glossy



■ **Sparkle New Red 49/30028**
Clear Topcoat Glossy



■ **Blue 49/40940**
Clear Topcoat Glossy



■ **Sparkle Burgundy 49/30193**
Clear Topcoat Glossy



■ **Violet 49/41100**
Clear Topcoat Glossy



■ **Sparkle Sky Blue 49/40074**
Clear Topcoat Glossy



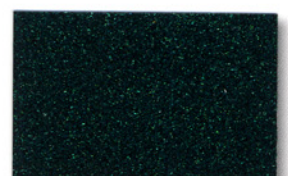
■ **Sparkle Copper 49/25002**
Clear Topcoat Glossy



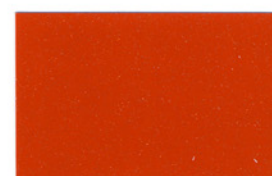
■ **Sparkle Electric Blue 49/40233**
Clear Topcoat Glossy



■ **Sparkle Light Orange 49/25006**
Clear Topcoat Glossy



■ **Sparkle Green 49/50024**
Clear Topcoat Glossy



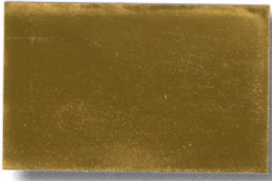
■ **Sparkle Bomber Orange 49/23531**
Clear Topcoat Glossy



■ **Sparkle Granny Smith 49/50032** Clear Topcoat Glossy

*Paper and ink limitations of color samples as well as influence from heat and light account for differences from actual powder coatings.

■ Transparent and Candy



Gold
49/20170



Candy Raspberry
49/31570



Black Chrome
49/80000



Brass
49/20180



Candy Red
49/33340



Copper
49/63130



Candy Purple
49/41480



Transparent Red
49/35810



Candy Teal
49/42130



Transparent Blue
49/46110



Candy Blue
49/43600



Transparent Green
49/55730



Candy Lime Green
49/54810

special effects

Notes

Colors and textures have been matched as close as possible. Paper and ink limitations, as well as influence of heat and light, account for differences from actual coatings. To aid in final product selection please contact your local TIGER Drylac office for a powder coated sample panel of the product of your choice.

Datasheets: Periodically updated datasheets, showing cure parameters, test results, pretreatment information and more are available for all products in this chart. Please contact your local TIGER Drylac office or visit www.tigerdrylac.com for the most current edition.

Custom Colors: Should our vast selection of standard finishes not be exactly what an application calls for, we will be happy to provide custom colors (220 lb. minimum order) with quick 7 to 10 day turn around times.



All (stock and custom) TIGER Drylac Series 39 and Series 49 products, made in the US and Canada are periodically re-certified and carry the UL (Underwriter Laboratory) Recognized Component Mark (Spec DTOV2.MH27573). This UL mark is for all equipment and products intended for the US and Canadian market.

Flourescent: One- and Two-coat Fluorescents, as well as Glow-in-the-Dark powder coatings have limited UV stability. Two-coat Fluorescent powder coatings should be applied over our bright White Base Coat 49/11000. For a variation and custom look they can also be applied over our Mirror Silver 49/91260 (try our Two-coat Yellow Fluorescent 49/21500 or Two-coat Orange Fluorescent 49/24080 as top coats) or over Xtreme Chrome 49/90177 or Sparkle Silver 49/90450. All Fluorescents are suitable for Corona and Tribo application equipment. Products are available in 5 lb minipacks and 44 lb boxes.

Hammertones: A wide range of color choices is available in our popular Hammertone finishes. Series 39 Hammertones are suitable for exterior applications (minimum film thickness guidelines must be observed to provide adequate film thickness in the valleys of the texture). Series 09 and 89 Hammertones are for interior applications only. All are suitable for Corona application equipment. They are packed in 5 lb minipacks and 44 lb boxes.

Designer Finishes and Antico: Primarily developed for the furniture and lighting industries, Designer Finishes and Anticos provide an out-of-the-ordinary designer look in two and three tone colors, textures and metallic undertones, simulating the oxidation of copper, natural rock and precious stone. All are suitable for Corona processing. Products are packed in 5 lb minipacks; Series 44 is packed in 55 lb boxes, and Series 49 and 59 come in 44 lb boxes.

Dormant Transparents: Dormant Transparents and Dormant Sparkle Transparents are applied as the base coat in this 2-coat system. The flamboyant shades of color and metallic color will not evolve, until a clear topcoat is applied. Samples in this chart, all top coated with our Clear Glossy 49/00530, are just a few of the variations of attractive finishes, that can be achieved by top coating with a variety of our Clear coats and Clear Glitters (see listing below). Products are suitable for Corona application (the best inter-coat adhesion is achieved by applying the base coat with Corona and the clear top coat with Tribo equipment (if available). Sold in 5 lb minipacks and 44 lb boxes.

Notes (continued)

Clear coat products available

(also shown in our TIGER Specialty brochure):

38/00001 Clear Glossy	Super Durable Polyester	(Exterior and Interior)
49/01234 Bengal Clear Glossy	TGIC Polyester	(Exterior and Interior)
49/00530 Clear Glossy	TGIC Polyester	(Exterior and Interior)
49/00280 Clear Semi-gloss	TGIC Polyester	(Exterior and Interior)
16/00030 Clear Matte	Acrylic Hybrid	(Exterior and Interior)
44/00003 Anti-graffiti Clear Glossy	Polyester-Urethane	(Exterior and Interior)
69/00300 Clear Ice Matte	Epoxy	(Interior)

Glitter Clear products available

(shown over various base coats in our TIGER Metallic brochure):

Glitter Gold 49/00310
Glitter Silver 49/00320
Glitter Twilight 49/00390

Transparent and Candy: Transparent and Candy colors have limited UV stability. Since all products are transparent, colors shown in this brochure are representative of a nickel plated substrate. Many other attractive substrates, i.e. chrome or brushed aluminum are suitable for top coating with Transparent or Candy colors. Otherwise we recommend any of the following base coats: Mirror Silver 49/91260, Xtreme Chrome 49/90177, Chrome OGF 49/91312 or Sparkle Silver 49/90450. All Transparent and Candy colors are suitable for application with either Corona or Tribo equipment. Products are packaged in 5 lb minipacks and 44 lb boxes.

TIGER Drylac U.S.A., Inc. Product Number Matrix

Series 09	Interior only	Polyester-Epoxy Blend (Hybrid)
Series 16	Exterior and Interior	Acrylic Hybrid
Series 58	Exterior and Interior	TGIC-Free Super Durable Polyester (available to approved applicators only)
Series 38	Exterior and Interior	Super Durable Polyester
Series 39	Exterior and Interior	TGIC Polyester
Series 44	Exterior and Interior	Polyester Urethane
Series 49	Exterior and Interior	TGIC Polyester
Series 59	Exterior and Interior	TGIC-Free Polyester
Series 69	Interior only	Epoxy
Series 75	Exterior and Interior	Fluoropolymer (available to approved applicators only)
Series 89	Interior only	Polyester-Epoxy Blend (Hybrid) Low/Fast Cure

and guidelines